



ARCHDIOCESE *of* MILWAUKEE

Stewardship

Opening Prayer

Loving God, we do good work, important work.

Instill in us a spirit of gratitude for the good work we do – together.

Help us to see you, God, in those we serve.

Fill us all with faith, hope and love as we continue to build your Kingdom.

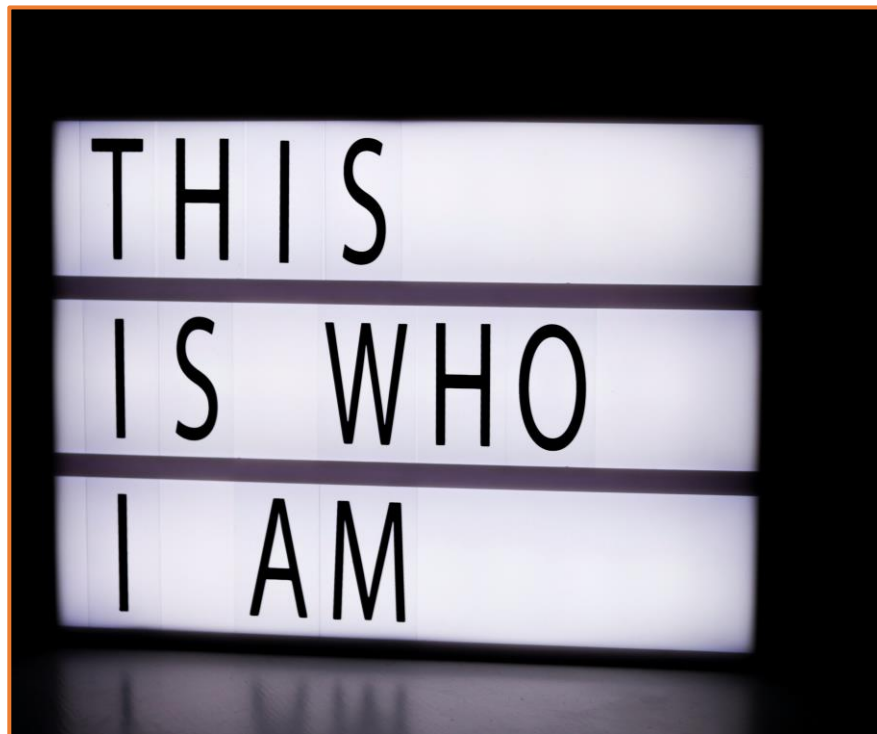
Unite us. Inspire us. Sustain us.

Help us all to see you and seek you in all that we do.

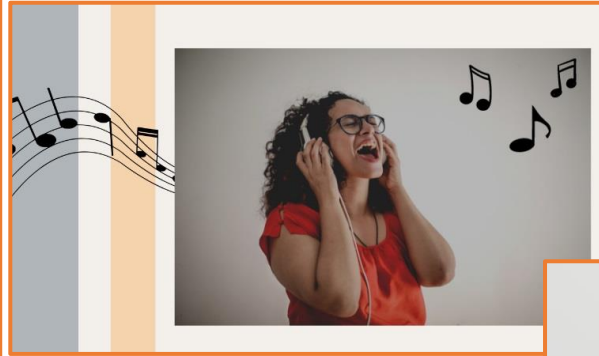
For this we pray, in the mighty name of Jesus.

Amen.

Yet I consider life of no importance to me, if only I may finish my course and the ministry that I received from the Lord Jesus, to bear witness to the Gospel of God's grace. Acts 20:24

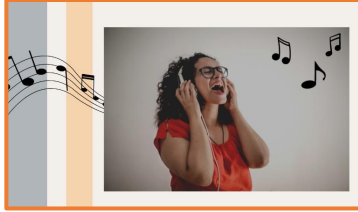


Stewardship = Parish Vitality



Caution!

Stewardship is **MORE** than Offertory!

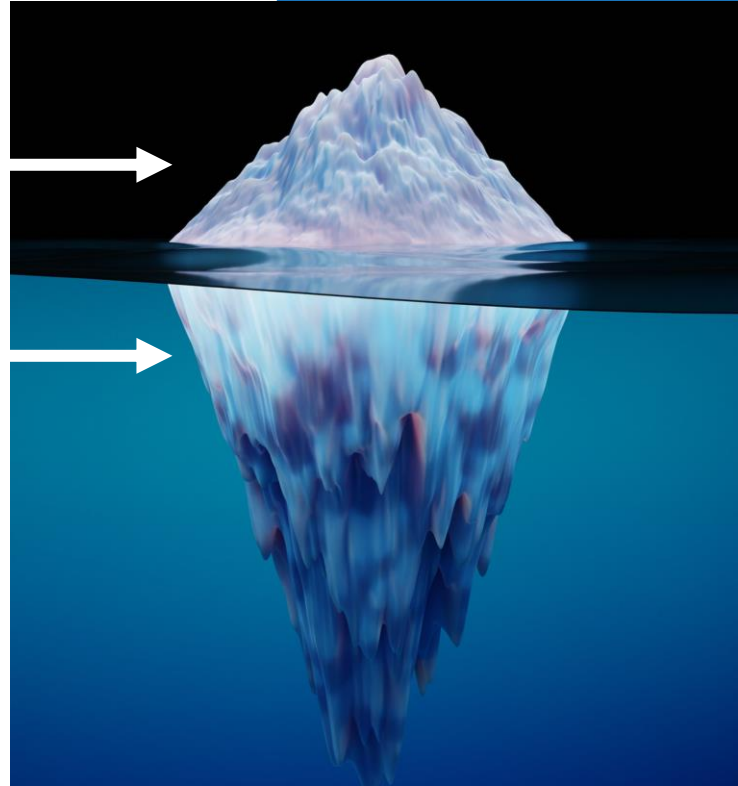


“When we successfully connect discipleship and giving, the money always follows. When we just aim for money, we miss out on both.”

Offertory

Offertory is Down

Welcoming
Faith growth
Gratitude
Customer Service
Communication



Where do we start?



- Welcoming
 - Take a fresh look at your welcoming of the parishioners and visitors. Does someone greet them? Or are they handed an order of worship with no greeting?
- Faith Growth
 - Are there a variety of ways for each parish member to grow in their faith? To pursue a deeper relationship with Jesus Christ?
- Gratitude
 - Banners, Signs, Bulletin, FlockNote, Pulpit messages saying things like: "Thank You!" "We appreciate You!"

Where do we start?



- “Customer Service”
 - How are the parishioners being served? Is it easy to contact the staff with questions? Are new parishioners welcomed personally and invited to give of their time, talent and treasure?
- Communication
 - How is your website? Is it easy to find Mass Times, Reconciliation options or Adoration times? Is it easy to donate online? Is it clear how to register with the parish? Are money asks the only pieces mailed?

Clear Communication is Key

- Speak to how the Church and the Parish is so very needed in our world today to bring people to Christ and to be a beacon of hope and peace – and use words when needed!
- Share how their funds are being used and the great impact of their giving with stories – not just numbers.
- Highlight how lives are being changed in the church and in the community **BECAUSE** of the gifts received.
- Celebrate successes!





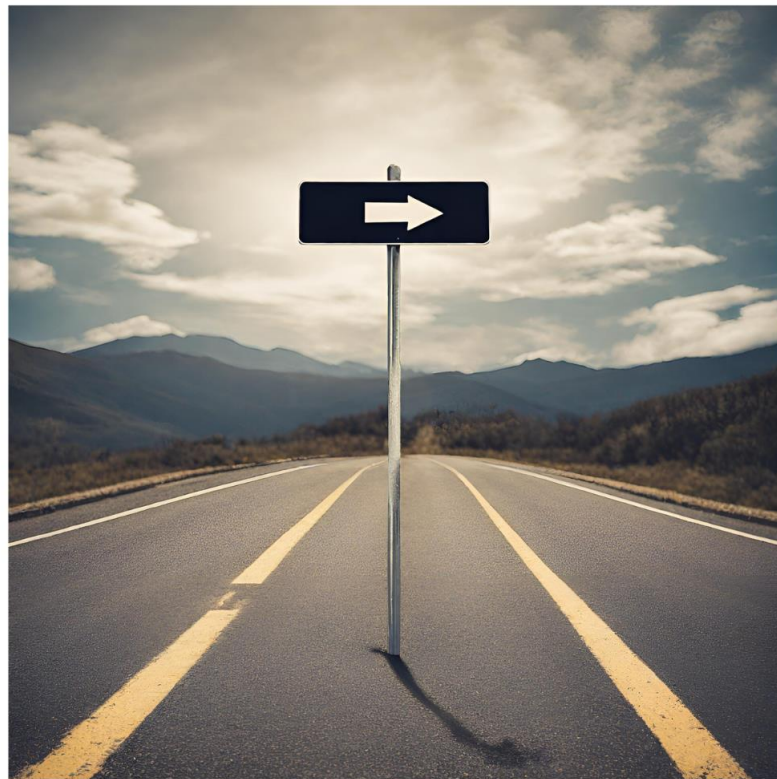
When you

- Welcome everyone
- Communicate clearly
- Share the impact of their giving
- Thank Profusely
- Provide attentive care
- Meet the needs of the community
- Help parishioners grow in their faith

You CAN grow YOUR parish.

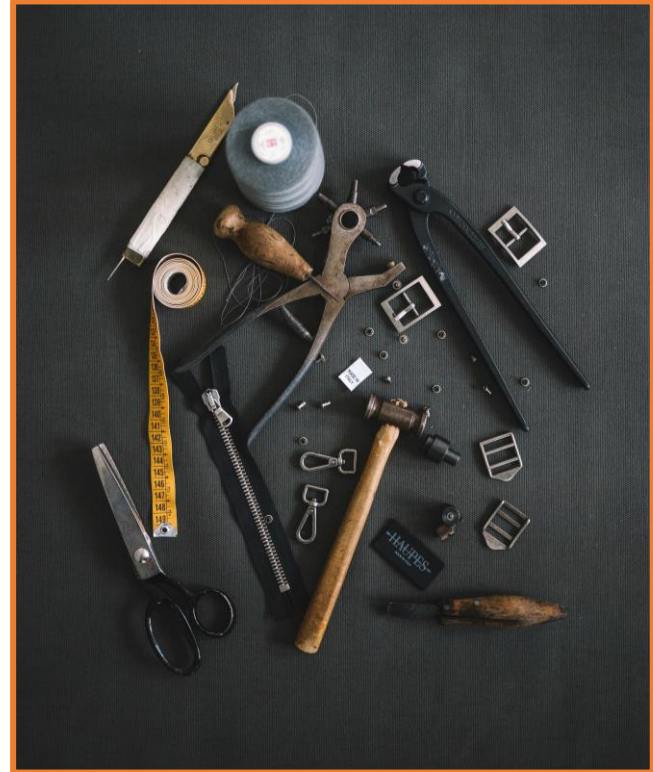
Reevaluation

- “We host prayer opportunities and two people come”.
- “It is always the same people who come to Adoration.”
- “Our last event had 10 people.”



Tools

- **Offertory Program**
 - Comprehensive plan with bulletin, email, and other communication pieces
 - 3 letter series customized to your parish
 - Cost is print & postage
- **Custom Solutions**
- **Webinars & Workshops**
- **"Circle Tour"**
- **Parish Stewardship page on archmil.org**
 - <https://www.archmil.org/parish-stewardship>



Closing Prayer

Lord of day and night, of beginnings and endings, as we prepare to conclude this meeting, we once again lift up our hearts to you, good and merciful Father.

We thank you for the gifts and blessings you so freely give to us, each and every day, especially those we take for granted.

Help us to grow in our love of You. Guide us as we strive to bring more people to know You, to love You and to serve You.

Watch over us and protect us from all evil whether visible or invisible.

*May your blessing be upon us, now and always,
Amen.*



Contact me!

Cindy Lukowitz

414-769-3572

lukowitzc@archmil.org